



EVERLAST RESIDENTIAL

Advanced Heating
& Hot Water Systems

Stainless Steel
Electric Water Heater

BUILT
TO LAST
LONGER

No Anode
Rods Needed



INDUSTRY
BEST
LIFETIME
WARRANTY

Lightweight
and Durable

40 & 50
Gallon Tanks

EVERLAST

Stainless Steel Electric Residential Water Heater

THERMOSTAT AND HIGH LIMIT CONTROLS:

Adjustable temperature range up to 160°F

HOT WATER CONNECTION:

Outlet connection on the top of the tank (with built in Heat Traps)

THE FINEST PROTECTION:

Laser welded through a concentrated heat source producing high quality, long lasting, 316L stainless steel tank construction (**lightweight**) - Superior corrosion resistance, eliminates the need for anode rods, protects against harsh water conditions for a lifetime of durability against leaks - Limited **LIFETIME Warranty** (with online registration)

MINIMAL HEAT LOSS:

Heavy-duty insulation

STAINLESS STEEL INCOLOY ELEMENTS:

Stainless steel screw plug increases corrosion resistance for longer element life versus conventional elements



STANDARD FEATURES

- Stainless Steel Tank
- Heavy Duty Insulation
- Electrical Connection Box
- Limited LIFETIME warranty (10 year warranty if not registered online)

IN THE BOX

- T & P Relief Valve
- Installation Manual
- Brass Full Port Drain Valve

**NO ANODE
RODS NEEDED**
RESISTS
SCALE BUILD UP
**LIGHT
WEIGHT**

EVERLAST ELECTRIC : STAINLESS STEEL WATER HEATER

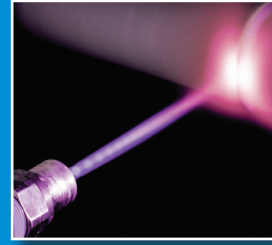
The Everlast Residential Electric Water Heater combines high quality stainless steel construction and energy efficient operation, providing long draws of hot water without consuming large amounts of energy. A cleverly designed water connection directs cold water to the heating element near the bottom of the tank to minimize the mixing of cold and hot water. Durable components, low standby heat losses, high recovery rates, and the industry's strongest warranty make the Everlast Commercial Electric Water Heater an ideal choice for electric water heating needs.

A Closer Look



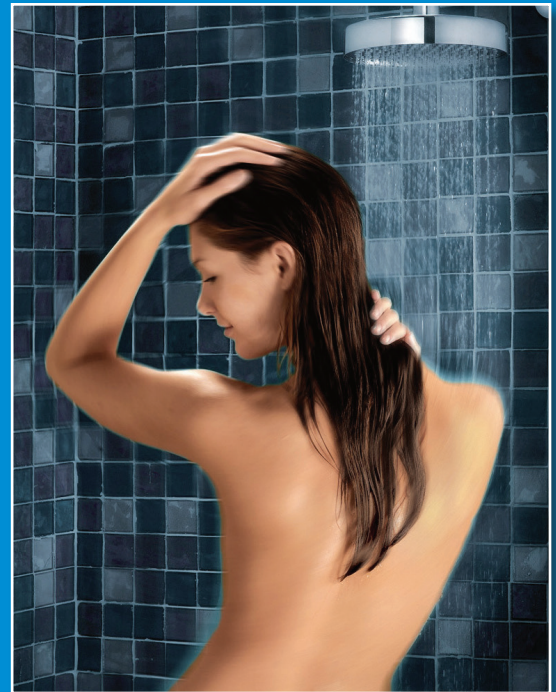
The Inlet & Outlet have Built in Heat Traps, Keeping the Heat in the Tank for Greater Efficiency

316L Stainless Steel Tank



Laser Welded 316L Stainless Steel Tank

For stronger more precise welded seams



Our Components are Made of Durable Materials:

Inlet and Outlet Nipples Constructed of Durable Brass

Stainless Steel Incoloy Elements

316 L Stainless Steel Tank Construction

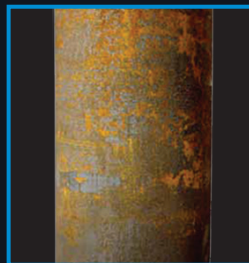
Made with High Grade 316L Stainless Steel Materials

The Advantages

Stainless Steel VS Glass-Lined



HTP's
Stainless Steel Tank
Lightweight

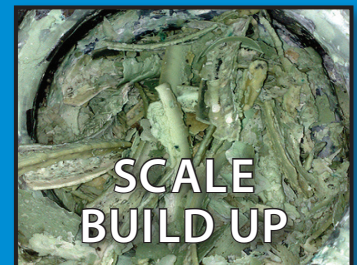


Top Competitor's
Glass-lined Tank
Very Heavy

Minimizes Scale Build Up
Prolongs Tank Life
No Need for Anode Rods
Lightweight Construction

NO Anode Rods Needed!

All coated tanks require anodes to delay the inevitable corrosion and tank failure. The average residential water heater lasts about 13 years. The Everlast residential stainless steel tank will outlast any coated steel tank in the market.

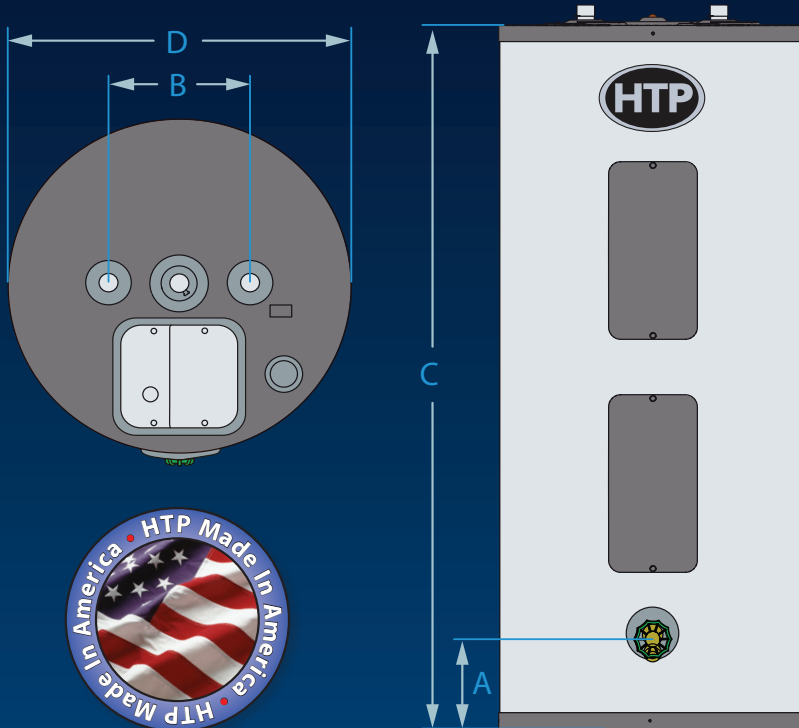


SCALE BUILD UP

Dimensions & Specifications

EVERLAST

Stainless Steel Electric Residential Water Heater



- Stainless steel incoloy element with stainless steel screw plug increases corrosion resistance for longer element life versus conventional elements
- Heavy duty insulation offers minimal heat loss
- Provides the finest protection against harsh water conditions with the best warranty in the industry
- Directs cold water to the heating element near the bottom of the tank and minimizes mixing of cold water providing long draws of hot water
- The inlet & outlet incorporate built in heat traps, keeping the heat in the tank for greater efficiency
- Thermostat and high limit controls -adjustable temperature range
- Temperature & pressure relief valve

Specifications and Dimensions						Water Temperature Ratings		
Model	Gal.	A	B	C	D	Minimum Delivered Temp.	Maximum Delivered Temp.	High Temp. Limit
EVR040C2X030	40	6"	8"	56.25"	19.5"	110°F	150°F	170°F
EVR040C2X045								
EVR050C2X030	50	6"	8"	66.625"	19.5"	43.3 C	65.5 C	76.6 C
EVR050C2X045								

Model	Wattage	Voltage	Height/ Diameter	First Hour Delivery	Recovery @ 90° F Rise	Shipping Weight
EVR040C2X030	3000	240	56.25"/19.5"	42 Gallons	13 Gallons	104 lbs
EVR040C2X045	4500			48 Gallons	20 Gallons	
EVR050C2X030	3000	240	66.625"/19.5"	49 Gallons	13 Gallons	118 lbs
EVR050C2X045	4500			55 Gallons	20 Gallons	