



MARVIN 
Windows and Doors

Built around you.

REMODELING AND REPLACEMENT SOLUTIONS CATALOG



You are unique and your home reflects it. So when it's time to remodel or add on, Marvin® builds the windows and doors that define your personal aesthetic and achieve your standards for beauty and quality. Our products capture the classic details and design features that make historical homes special,

and also employ the latest innovations and technologies when it comes to function and performance. Whether you need windows and doors for a new addition, a historic renovation or a replacement project, if you can imagine them, we can build them exactly to your specifications.



Every window and door

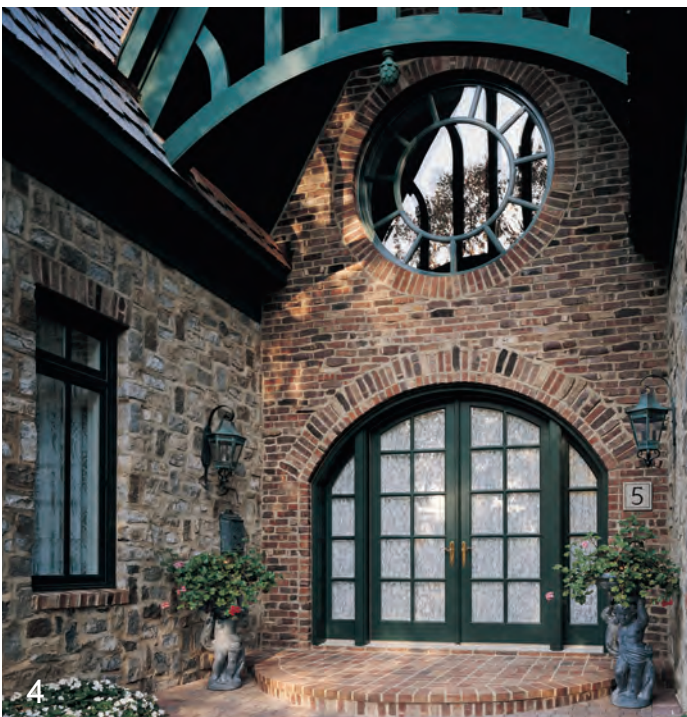


built to the highest standard.



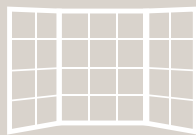
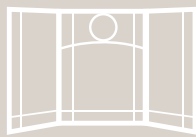
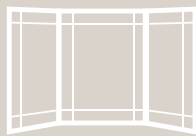
FOR EVERY STYLE OF HOME, THERE ARE ENDLESS STYLES OF WINDOWS AND DOORS.

We offer thousands of shapes and sizes of windows and doors. Each is built specifically for the needs of the project. Every home remodeling project presents its own unique challenges, so from the most basic window or door to the most complex, each one is individually tailored to your needs. We specialize in historic replications, making sure the divided lite patterns, hardware finishes, clad colors and custom features are true to the style of the home while adding heightened performance and energy efficiency. Our *Built around you*® philosophy means if you can dream it, we can build it.



LET YOUR IMAGINATION
ROAM AND WE'LL
BUILD THE WINDOWS
AND DOORS TO MATCH.

A bay or bow window from Marvin® turns an ordinary wall into an extraordinary expression of your personal style. Designed with options to simplify a retro fit or unique angle for an existing opening.



Play with any combination of shapes
plus divided lite configurations and we'll
build the multi-window display that best
captures your view.



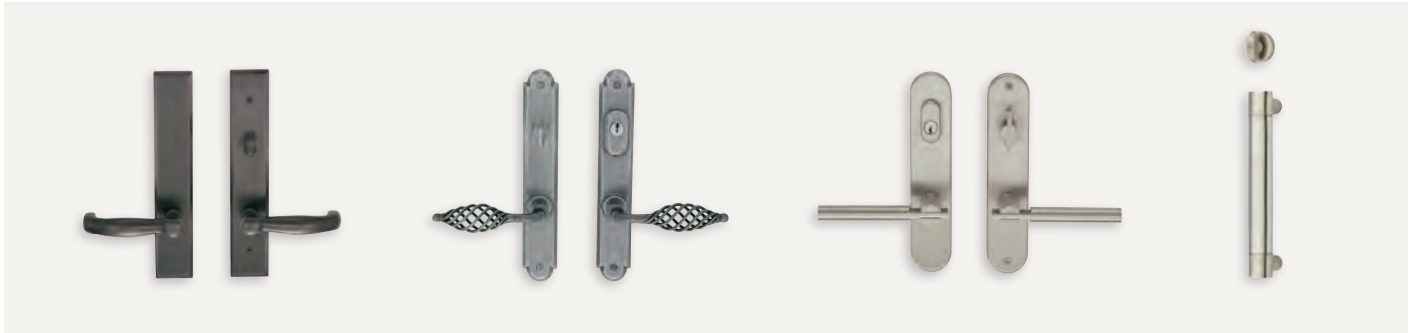
Open up the room with our Ultimate
Swinging French Doors. Thoughtfully
designed from the extra wide stiles and
tall bottom rails to the ergonomically
designed handle that cradles your palm.



THERE IS HISTORY IN EVERY DETAIL.

Classic touches are what make older home designs beautiful. With Marvin® windows and doors, you can remodel a historic home and match every original classic detail, while benefitting from improved efficiency and state-of-the-art functionality. Capture the period of any home with endless options for hardware, divided lites, glass, ogee lugs, exterior clad and more.

ARCHITECTURAL HARDWARE For more options visit Marvin.com.



CLAD CASINGS & SUBSILLS



When it comes to design, clad casings and subsills add the details, color and texture to windows and doors that help make your vision come to life. Marvin's 19 clad colors, 9 casing profiles and 6 subsill options give you the flexibility to express your personal style.

- Choose from a wide array of clad colors, or create a custom color that springs from your imagination.
 - Add exterior clad casing to Marvin windows and doors to enhance your home's architectural detail. These casings provide the look of wood without the extra work.
 - Tie it together by selecting from a wide selection of subsills to complement your choice of casing.
- Marvin offers you choices to replicate virtually any look and match the historic integrity of the home.

See page 26 for more options.

OGEE LUGS



Ogee lugs are available for both wood and clad-wood windows, and can be added to the exterior of the checkrail. They are perfect for adding a historic detail to renovations and new construction.





ULTIMATE REPLACEMENT CASEMENT WINDOWS



INTERIOR



EXTERIOR



1 Crank handle twice.



2 Push down on the hardware arm and push the window away. Then crank arm back.



3 Swing window all the way open, pulling it across towards the lock for accessibility to exterior glass.

EASY WASH MODE

THE CASEMENT THAT REPLACES ANYTHING.

The Ultimate Replacement Casement from Marvin® offers you ultimate design flexibility with superior performance in a window that can be used as a frame-in-frame insert or complete window replacement for a casement, double hung or virtually any other style of window. When it comes to performance, a revolutionary hardware system provides the widest open views even at extra-large sizes. Standard options give you the ability to replicate the look of double hungs. You can finally replace your old window, vastly improve performance, upgrade energy efficiency, and rest assured that your original architecture style is preserved.

STANDARD FEATURES

- One-lite LoE²-272[®] with Argon insulating glass
- Satin Taupe folding handle
- Satin Taupe sash lock
- Bare wood interior
- Extruded aluminum clad exterior
- 2 3/16" (55 mm) jambs
- Installation hardware

HARDWARE

HANDLES



LOCK LEVER



DETAILS



DESIGN FLEXIBILITY

5 Simulated divided lite size options $\frac{5}{8}$ ", $\frac{7}{8}$ ", $1\frac{1}{8}$ ", $1\frac{3}{4}$ ", and $2\frac{13}{32}$ " tall bottom rail, simulated checkrail and 3 sticking profile options are available to provide maximum design flexibility.



ULTIMATE PUSH OUT & ULTIMATE REPLACEMENT AWNINGS

LOCKS AT THREE DIFFERENT OPENING ANGLES



The exclusive sash limiter device on the Ultimate Push Out allows you to pre-set and lock the window at specific opening angles. This means you can now safely open your window on windy days – just flip a lever to lock the sash securely in place.

ULTIMATE PUSH OUT REPLACEMENT CASEMENT

EXCLUSIVE SASH LIMITER

INNOVATIONS THAT HEIGHTEN AND LIGHTEN.

Ultimate Push Out Replacement Casement windows provide a more traditional alternative to crank-out style casement and awning windows. With a multi-point locking system, the Push Out is extremely easy to operate – just unlock a single handle to open the sash. Our exclusive sash limiter device also gives you the flexibility of locking the open window at your desired angle.

The Ultimate Collection also offers replacement awnings. Ultimate awnings open from the bottom, and can be used on their own or as a complement to casement windows. Ultimate Replacement Awnings can achieve wider than ever openings for better airflow and expansive views.

ULTIMATE REPLACEMENT AWNING



ULTIMATE PUSH OUT REPLACEMENT AWNING



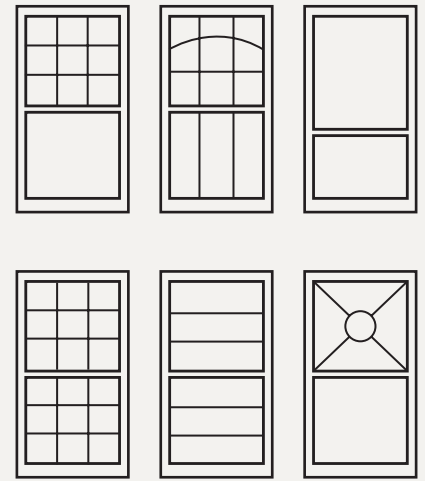


ULTIMATE INSERT DOUBLE HUNG WINDOWS



INTERIOR

EXTERIOR



These are only a few designs for divided lites. Go to Marvin.com for more possibilities.

DESIGN POSSIBILITIES

REVIVE THE BEAUTY WHEN YOU REPLACE THE WINDOW.

With the Ultimate Insert Double Hung window you have a beautiful alternative to vinyl replacement windows. There's no need to take out the current frame, remove trim, replace wallpaper or disturb siding. The frame-in-frame design is crafted specifically to your window opening, so it fits perfectly into the existing space. Options like a flat or beveled frame ensure a snug fit. The sash even tilts or comes out for easy cleaning, so there's less work and more time to enjoy the scenery. And Marvin® Windows and Doors' vast array of hardware finishes, wood species and clad colors means you'll get the exact look you want.

STANDARD FEATURES

- One-lite LoE²-272[®] with Argon insulating glass
- Satin Taupe sash lock
- Bare wood interior
- All wood exterior (wood units)
- Extruded aluminum clad exterior (clad units)
- 4 9/16" (116 mm) jambs (wood units)
- 3 1/4" (82.5 mm) jambs (clad units)
- Installation hardware

HARDWARE

SASH LOCK



DETAILS



SASH LIFT



(optional)

TILTING SASH

The hardware easily operates with one hand so hard to clean areas become accessible with the tilt feature.



TILT PAC® DOUBLE HUNG SASH REPLACEMENT KIT



TILT PAC® DOUBLE HUNG KIT





THERE'S NEW LIFE FOR YOUR OLD WINDOWS.

With the Marvin® Tilt Pac Double Hung kit, replacing the sash on your double hung window is an exercise in simplicity. This sash replacement kit is designed specifically for replacing older double hung windows; the Tilt Pac is ideal if the frame is in good shape, but the sash or hardware need replacement. Both sash are fully operational and tilt in for easy cleaning. Create or match the lasting look you want with a variety of divided lites, screens and hardware finishes. Everything you need is included so all it takes is just four simple installation steps and you'll be admiring the brand new, great looking, energy efficient windows you've been dreaming about.

STANDARD FEATURES

- One-lite LoE²-272® with Argon insulating glass
- Satin Taupe sash lock
- Bare wood interior
- All wood exterior (wood units)
- Extruded aluminum clad exterior (clad units)
- Installation hardware

HARDWARE

<p>SASH LOCK</p>

<p>SASH LIFT</p>

<p>(optional)</p>

<p>DETAILS</p>

<p>MAGNUM TILT PAC PANNING SYSTEM</p> <p>For extra-large sizes, try the Magnum Tilt Pac. Optional Magnum Panning Systems cover weathered exterior sills and trim with a new exterior of low-maintenance extruded aluminum panning. Panning is easy to assemble.</p>
<p>15</p>

REPLACEMENT SOLUTIONS FOR FULL-FRAME TEAR OUTS

Options for an existing frame in bad condition, a new addition, or when creating a completely different window style.

ULTIMATE DOUBLE HUNG WINDOWS

Marvin® Windows and Doors' popular, versatile, state-of-the-art Double Hung window showcases authentic looking lines and hardware, plus jams that feature more wood than common double hungs.

- Both sash tilt effortlessly in or can be removed for easy cleaning
- Classic looks with optimum energy efficiency
- Choose from rectangular or round top variations



INTERIOR



EXTERIOR

SASH LOCK



SASH LIFT



(optional)

HARDWARE

ULTIMATE DOUBLE HUNG MAGNUM WINDOWS

The Ultimate Double Hung Magnum is designed for large residential areas, commercial applications and historic renovation.

- Available as large as 5 1/2' wide x 10 1/2' tall
- Its site lines and profiles match Marvin's Ultimate Double Hung family of products, so window types can be mixed and matched as the size of the opening requires
- A high quality spiral balance system meets AAMA 902-99 Class 5 specifications providing smooth operation at every size



INTERIOR



EXTERIOR

SASH LOCK



SASH LIFT



(optional)

HARDWARE

BAY WINDOWS

Traditionally, bays are made from three windows: a large picture window is flanked by smaller windows on the sides that are set at 30°, 45°, 60°, 90°, or custom angles.

- Ideal for accentuating and enhancing views
- A great way to add a window seat
- Bays can be as cozy or expansive as you wish
- Optional retro-fit jamb extension makes installation into an existing window opening much more convenient



INTERIOR

EXTERIOR

ULTIMATE DOUBLE HUNG ROUND TOP WINDOWS



Standard double hung window with a half round or elliptical transom.

VARIATION 1



Double hung window with true radius upper sash and frame. Both interior and exterior have radius top.

VARIATION 2



Standard double hung window on the interior with arched exterior casing.*

VARIATION 3



Double hung window with eyebrow radius upper sash and frame. Both interior and exterior have a radius top.

VARIATION 4



Standard double hung with a rectangular sash and radius glass designed to have a round top appearance.*

VARIATION 5

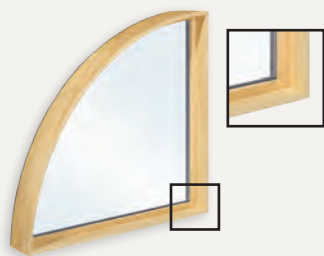


Standard double hung with a round top appearance from the exterior, thanks to curved exterior components. Interior has a standard frame with rectangular sash and radius glass.*

VARIATION 6

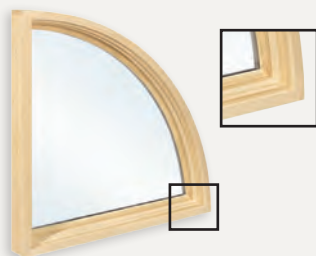
* Available for wood windows only.

POLYGONS AND SPECIAL SHAPE WINDOWS



DIRECT GLAZE

Direct Glaze maximizes the light coming through the window. Glass is set directly into the window frame, maximizing the glass surface of the window.



IN-SASH

In-Sash windows have a sash that is set in the frame of the window. In-Sash is a great option when you want to match the sight lines of other windows or doors in your house.

Polygons and special shapes are used to add dimension and drama to a window design. Choose from octagons, hexagons, trapezoids, pentoids, triangles – virtually any geometric shape. Both polygon and picture windows are available with a variety of glass and divided lite options.

ULTIMATE CASEMENT WINDOWS

A Casement features a cranking handle that opens and closes the window from the side, like a book.

- Features the revolutionary wash mode
- Countless standard design options
- Energy efficient



INTERIOR



EXTERIOR

FOLDING HANDLE



CRANK HANDLE



HARDWARE

ULTIMATE PUSH OUT CASEMENT WINDOWS

Extremely easy to operate, just unlock a single handle to push open the sash.

- Provides a more traditional alternative to crank out Casements and Awnings
- Exclusive sash limiter device allows you to pre-set and lock the window at multiple open angles



INTERIOR



EXTERIOR

PUSH OUT HANDLE



HARDWARE

ULTIMATE AWNING WINDOWS

Hinged to open out at the bottom using a cranking handle.

- Can be used alone or as a complement to Ultimate Casement window
- Choose from push out or cranking hardware
- Available in sizes as large as 72" x 72"



INTERIOR

EXTERIOR

FOLDING HANDLE



CRANK HANDLE



HARDWARE

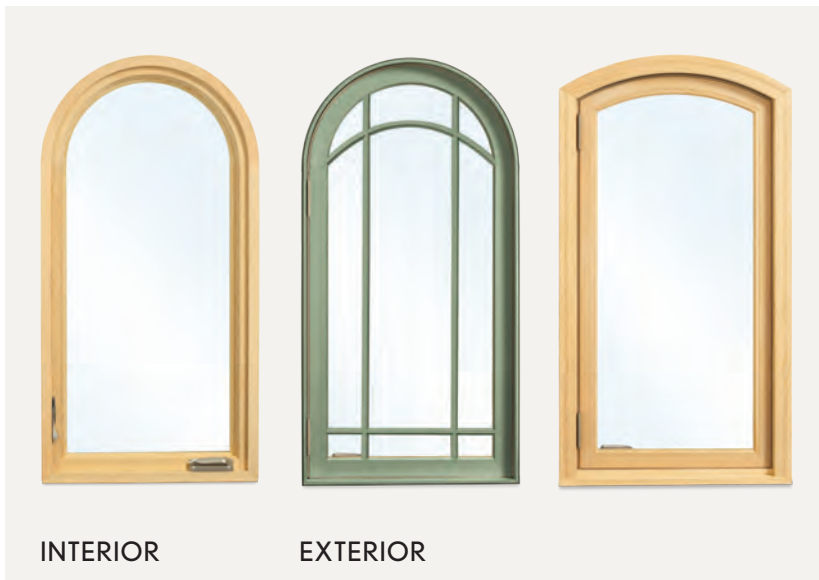
ULTIMATE FRENCH CASEMENT WINDOWS



The French Casement has no center stile or vertical post, making it ideal for those who want to enjoy an unobstructed view.

- Choose from push out or cranking hardware
- The full 4 9/16" jamb on the Ultimate French Casement is ideal for full frame replacement and new construction

ULTIMATE ROUND TOP WINDOWS



Ultimate Casement Round Tops don't limit design to straight lines.

- Choose from over 60 Round Top shape options
- Round Tops can stand alone, making their own unique statement or be used as a transom, complementing casements

BOW WINDOWS



Any number of Ultimate Casement or Ultimate Double Hung windows can be joined together to create this gently curved window design, the Bow Window.

- A lovely way to open any room and capture a view
- Curved, laminated seat and head boards are available for a perfect finish

ULTIMATE VENTING PICTURE WINDOWS

With a generous unobstructed view, the patented Marvin® Ultimate Venting Picture window takes the industry to new heights by combining the beauty of a picture window with the opportunity for cross-ventilation.

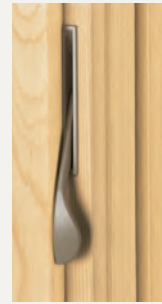
- Mix and match with other casements and awnings
- A great solution for adding ventilation to the room



INTERIOR

EXTERIOR

LOCK LEVER



HARDWARE

TILT TURN AND HOPPER WINDOWS

The Tilt Turn window is a dual-functioning window: swing it in like a door or tilt the top into your room for ventilation. The Hopper is situated horizontally so it virtually “scoops” air into the room.

- One handle controls both operations
- A great window for emergency exit access and easy cleaning



INTERIOR

EXTERIOR

HANDLE



HARDWARE

ULTIMATE GLIDER WINDOWS

The Ultimate Glider is a reliable and space-saving choice for simple operation and energy efficiency. The sleek hardware provides both smooth operation and operates the two-point, auto-locking system.

- The Ultimate Glider sash slides horizontally on the window sill
- It's a perfect window for areas where a swinging sash would be in the way, for example, overlooking a deck or porch
- The Ultimate Glider also features a patent-pending sash removal system for easy cleaning



INTERIOR

EXTERIOR

SASH REMOVAL



FOLDING HANDLE



HARDWARE

ULTIMATE SWINGING FRENCH DOORS



INSWING



OUTSWING

THIS DOOR KNOWS HOW TO MAKE AN ENTRANCE.

Unmatched in fit and finish, our Ultimate Swinging French Doors offer you a remarkable amount of design flexibility with trusted Marvin® quality. The inswing model accentuates any interior with its grand appearance while the outswing is ideal for high-traffic areas or limited interior space. When it comes to renovations, these doors are often the perfect solution and fit, with sizing that complements many existing openings and have several options that are available to offer the design flexibility of replicating original historical details. Designed to the nth degree, most come with a DP40 rating for commercial-grade performance. And the sill is made with super tough Ultrex® – so your sill doesn't warp, rot, corrode or fade over time.

STANDARD FEATURES

- Tempered, one-lite LoE²-272® with Argon insulating glass
- Concealed, multi-point locking system on the active panel
- Head and foot bolts on inactive panel
- Satin Taupe adjustable hinges
- Beige Ultrex sill
- Bare wood interior
- All wood brick mould casing (wood units)
- Extruded aluminum clad exterior (clad units)
- 4 9/16" (116 mm) jambs

HARDWARE

HANDLE



DETAILS



HINGES



ADJUSTABLE

BUTT
(optional)

ULTIMATE SWINGING SCREEN

Storm and screen combinations feature panels that are removable from the inside for easy cleaning.

Available for wood Ultimate Inswing French Doors and wood Arch Top Inswing French Doors.

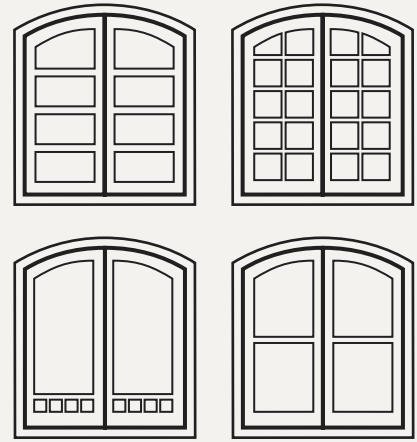
ULTIMATE ARCH TOP SWINGING FRENCH DOORS



INTERIOR



EXTERIOR



These are only a few designs for divided lites. Go to Marvin.com for more possibilities.

DESIGN POSSIBILITIES

HOW TO ROUND OUT THE BEST.

Marvin® Arch Top French Doors offer heightened elegance. Graceful curves contain the same strength and durability as our other French doors, but add more design possibilities to any entrance. Choose inswing door panels for a classic appearance or choose outswing if you need more room indoors. There's flexibility with design and features so you can make your entrance as grand as it can be.

STANDARD FEATURES

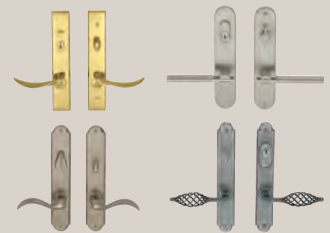
- Tempered, one-lite LoE²-272[®] with Argon insulating glass
- Concealed, multi-point locking system on the active panel
- Head and foot bolts on inactive panel
- Satin Taupe adjustable hinges
- Oak liner on beige Ultrex[®] sill (outswing only)
- Bare wood interior
- Interior pine trim with plinth blocks
- All wood brick mould casing (wood units)
- Extruded aluminum clad exterior (clad units)
- 4 9/16" (116 mm) jambs

HARDWARE

HANDLE



DETAILS



HINGES



ADJUSTABLE

BUTT
(optional)

ARCHITECTURAL DOOR HANDLES

Designed to fit Marvin's Ultimate Swinging French Doors, Architectural hardware includes designer styles from four exclusive hardware brands. For more options, visit Marvin.com.

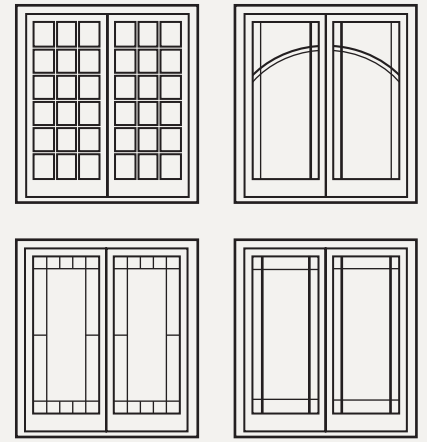
ULTIMATE SLIDING FRENCH DOORS



INTERIOR



EXTERIOR



These are only a few designs for divided lites. Go to Marvin.com for more possibilities.

DESIGN POSSIBILITIES

SPACE-SAVING, BUT AWE-INSPIRING.

Enjoy the elegance of our French door in a space-saving sliding version. Our Ultimate Sliding French Doors are thoughtfully designed from the extra-wide stiles and tall bottom rails to the ergonomically designed handle that cradles your palm. Screens are top hung so they glide smoothly and won't slide off the track. The multi-point lock comes standard, or you can choose the three-point locking system for added security. With 19 clad color varieties and our Standard or Ultimate Screens, you can have the French door that speaks to your style.

STANDARD FEATURES

- Tempered, one-lite LoE²-272[®] with Argon insulating glass
- Multi-point locking system
- Oak liner on beige Ultrex[®] sill
- Bare wood interior
- All wood brick mould casing (wood units)
- Extruded aluminum clad exterior (clad units)
- 4 9/16" (116 mm) jambs

HARDWARE

HANDLE



DETAILS



RAISED OR FLAT PANEL DOOR

Raised or flat panels add a classic look to any door. Available for Sliding, Swinging and Arch Top French Doors.

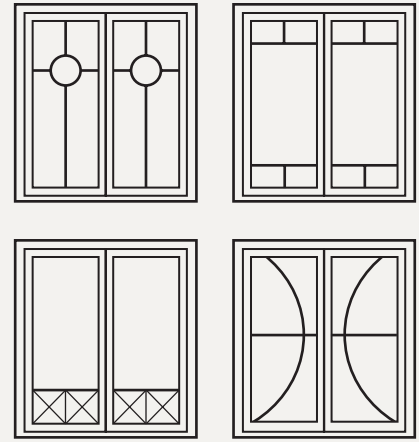
SLIDING PATIO DOORS



INTERIOR



EXTERIOR



These are only a few designs for divided lites. Go to Marvin.com for more possibilities.

DESIGN POSSIBILITIES

EVEN YOUR PATIO DOOR CAN HAVE UNRIVALED PERFORMANCE.

Sophistication and contemporary design are matched with smooth operation to create doors that perform beautifully. Our Sliding Patio Doors feature two large glass surfaces that allow light to make a grand entrance into any room. Three-inch stiles and rails plus a sill made from super tough Ultrex[®], a pultruded fiberglass material, add to the sturdiness and performance, while features like the harp-shaped handle provide an elegance that elevates a patio door to perfection. Plus, standard sizes are available to fit many existing openings.

STANDARD FEATURES

- Tempered, one-lite LoE²-272[®] with Argon insulating glass
- Two-point locking system
- Oak liner on beige Ultrex sill
- Bare wood interior
- All wood brick mould casing (wood units)
- Extruded aluminum clad exterior (clad units)
- 4 9/16" (116 mm) jambs

HARDWARE

HANDLE



DETAILS



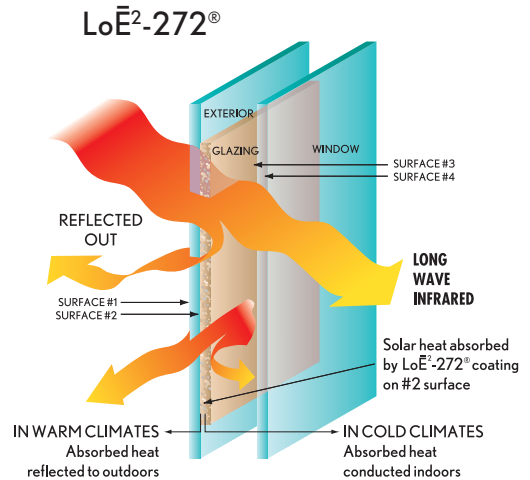
ULTIMATE TOP HUNG SCREEN DOOR

Aluminum top hung sliding screen with roller bar, adjustable rollers and replaceable bottom guide create smooth operation. The exterior profile replicates the look of a traditional wood screen.

ENERGY EFFICIENCY MADE EASY.

Our windows and doors aren't just beautiful – they can help save you energy. Always striving to meet the needs of an ever-changing environment, Marvin® builds energy efficiency into product performance while bringing your inspiration to life. Marvin offers a variety of energy efficient glass options:

- **U-factor** - This measures the rate of heat loss and how well a product insulates. The lower the number, the better a product is at keeping heat inside a building. The U-factor is key in the winter months, and important to consider in choosing a window.
- **Solar Heat Gain Coefficient (SHGC)** - this measures how well a product blocks heat from the sun. The lower the number, the better. In southern climates or high sun intensity areas, you might actually want to keep the sun's heat out of your house. Windows can help do that.
- **R-value** - This measures resistance to heat loss. Many people are familiar with the R-value because of its use in home insulation. But actually, for windows and doors, U-factor and solar heat gain coefficient are more important measurements.
- **Design Pressure Rating** - The "DP" measures the amount of pressure a door or window will withstand when closed and locked. Each DP rating also establishes other performance factors such as water penetration; air infiltration; structural pressure; forced entry; and operational force. The higher the DP numbers, the better the performance. Look for the certified hallmark of the Window and Door Manufacturers Association.



Marvin is dedicated to producing enduring, energy-efficient products in ways that will support a sustainable future.



Marvin provides many glass options on our products to meet or exceed ENERGY STAR® guidelines.

GLASS OPTIONS

LoE²-272® (Standard) - Features a double metallic coating on the inside glass surface to reflect or absorb the sun's warmth and reduce damaging UV rays. Offers enhanced U-factor and Solar Heat Gain Coefficient (SHGC).

LoE-180™ - Glass featuring a single metallic coating, blocks heat loss to the outside and reflects heat back in to the room. Ideal glazing for cold, northern regions and passive solar applications because it allows the winter sun's heat to pass into the home. Features higher SHGC than LoE²-272®.

LoE³-366® - Glass featuring three metallic layers of silver, this glass rejects solar heat and features a lower SHGC than LoE²-272®. Recommended for warm climates where cooling costs are high and also for areas where intense exposure to the sun is an issue.

Tripane - Features two layers of LoE glass with a clear center pane for a lower U-factor. A mix of LoE coatings, plus Argon or Krypton fill can be specified to meet performance needs.



ENERGY PANEL

Often confused with storm windows, an Energy Panel is a glazing option consisting of a removable, exterior glass panel. Energy panels cover the exposed glass surface with added energy efficiency for wood windows with single glazing.



STORM & SCREEN COMBO

A combination unit is composed of two movable glass panels and one movable screen panel. The individual panels can be configured multiple ways, and can be easily removed from the interior.

CLAD COLORS, CASINGS & SUBSILLS

MARVIN® CLAD PROFILES



BRICK MOULD CASING
WITH A246 SUBSILL
IN EBONY



KINSELY CASING
WITH A1451 SUBSILL
IN CASHMERE



THORTON CASING
WITH A1453 SUBSILL
IN SHERWOOD GREEN



POTTER CASING
WITH A1451 SUBSILL
IN CASCADE BLUE



FLAT CASING
WITH A246 SUBSILL
IN WINEBERRY



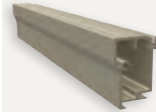
GRAYSON CASING
WITH A1450 SUBSILL
IN BRONZE

FLAT CASING



SUBSILL
COMPATIBILITY
A247 A246

BRICK MOULD CASING



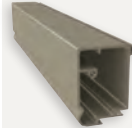
SUBSILL
COMPATIBILITY
A217 A246

COLUMBUS CASING



SUBSILL
COMPATIBILITY
A1450 A1452
A1451 A1453

GRAYSON CASING



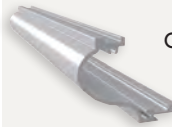
SUBSILL
COMPATIBILITY
A1450 A1452
A1451 A1453

KINSELY CASING



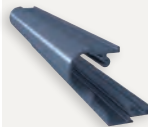
SUBSILL
COMPATIBILITY
A1450 A1452
A1451 A1453

RIDGELAND CASING



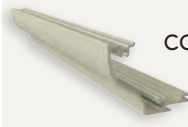
SUBSILL
COMPATIBILITY
A1453

STRATTON CASING



SUBSILL
COMPATIBILITY
A1452 A1453

THORTON CASING



SUBSILL
COMPATIBILITY
A1450 A1453
A1452

POTTER CASING



SUBSILL
COMPATIBILITY
A217 A1450 A1452
A246 A1451 A1453

CLAD COLORS



PEBBLE GRAY BAHAMA BROWN EVERGREEN BRONZE STONE WHITE



EBONY COBALT BLUE WINEBERRY COCONUT CREAM HAMPTON SAGE



CASHMERE ARCTIC WHITE CUMULUS GRAY DESERT BEIGE SHERWOOD GREEN

Printed color may not be accurate representation. Ask your local Marvin retailer for color chips.



SIERRA WHITE CADET GRAY CASCADE BLUE FRENCH VANILLA

SUBSILLS



A217 A246 A1450 A1451 A1452 A1453

OPTIONS

WOOD SPECIES & FINISHES



PINE



VERTICAL GRAIN
DOUGLAS FIR



MAHOGANY



DOUGLAS FIR



CHERRY



WHITE OAK



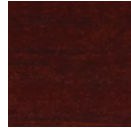
HONEY



WHEAT



HAZELNUT



CABERNET



ESPRESSO



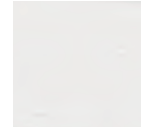
LEATHER



CLEAR COAT



PAINTED
INTERIOR
FINISH -
WHITE



PRIMED
WOOD

Note: Stain colors are shown on Pine. To see all six beautiful finishes visit Marvin.com or download the Marvin® Finishes app.

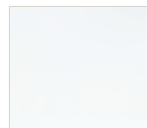
HARDWARE FINISHES



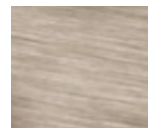
SATIN TAUPE



BRONZE



WHITE



SATIN NICKEL



SATIN
CHROME



OIL-RUBBED
BRONZE



BRASS



ANTIQUÉ
BRASS

SIMULATED DIVIDED LITE (SDL)



SDL is an energy-efficient way to create the look of divided lites. SDL bars are permanently adhered to both sides of the glass.

SIMULATED DIVIDED LITE WITH SPACER BAR



SDL bars are combined with spacer bars installed between the glass, creating the effect of Authentic Divided Lites.

AUTHENTIC DIVIDED LITE (ADL)



Separate panes of glass are glazed between muntin bars. Marvin craftsmanship and state-of-the-art performance are available in traditional, single-glazed, true divided lites. (Available for wood units only.)



GRILLES



Solid wood Grilles on the interior offer the look of classic divided lites, but can be easily removed for cleaning.

GRILLES-BETWEEN-THE-GLASS (GBG'S)



Grilles are permanently installed between the glass panes. This low-maintenance grille is available with a two tone color option.

Marvin.com

To see how windows and doors can be Built around you by Marvin®, please visit your local Marvin dealer. To find a dealer nearest you, visit marvin.com or call 1-888-819-2470. Your Marvin dealers are window and door professionals and are available to help you choose the best Marvin product to suit your needs. In Canada, call 1-800-263-6161.

